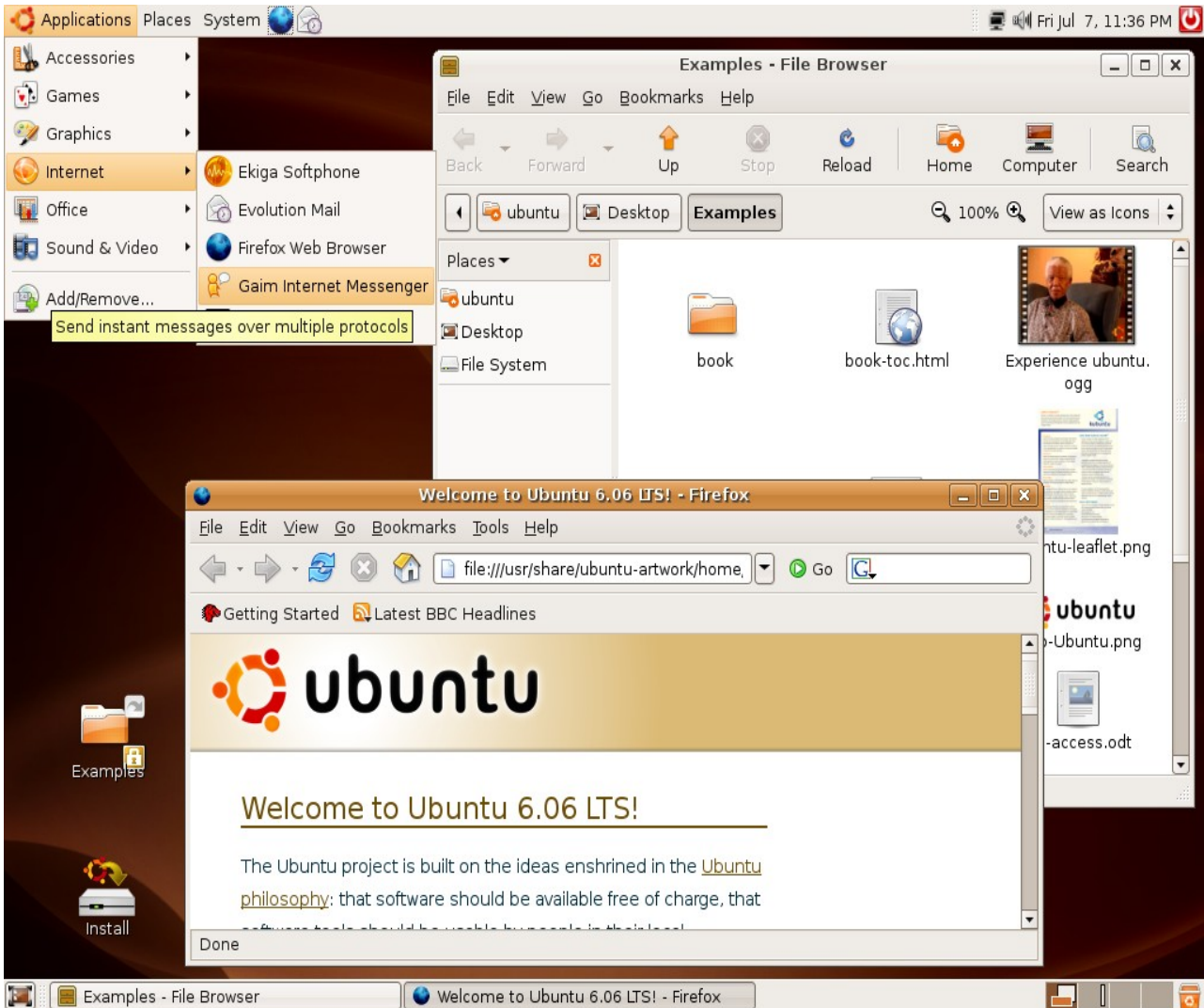


## What is a Live CD?

A Live CD is a CD that runs, in this case, the entire operating system directly from the CD without touching your hard drive, unless you decide to install *Ubuntu* on your hard drive. This is great for testing and to just play around with *Ubuntu* without any worries. It is also nice to have a Live CD if your preferred installed operating system suddenly will not boot and you need to take backup of some files, surf the web, do some writing and so on. *Ubuntu* uses the GUI (Graphical User Interface) *Gnome*, most further on will be *Gnome* orientated, but I will look into *KDE* and *Xfce* later on to show how they work and look at some of the key differences.



This is a picture of a Live CD session, it looks just the same as a newly installed *Ubuntu*, though you might experience some slight speed reduction using the Live CD.

In the boot menu, probably the first screen you will see when you start your computer with *Ubuntu*, if your computer is set to boot from CD's first, contains a lot of useful options. The "Start or install *Ubuntu*" option starts the Live CD session, the other speaks for themself. At the bottom you will see some useful options assigned to the F keys, the "F3 Keymap" option should be very useful to get your keyboard working properly so you will not have to deal with it later.