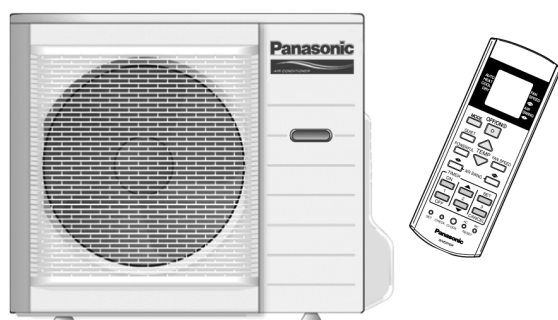
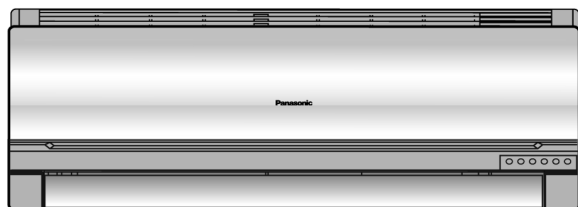


Service Manual

Air Conditioner

CS-E9FKR CU-E9FKR
CS-E12FKR CU-E12FKR
CS-E15FKR CU-E15FKR



⚠ WARNING

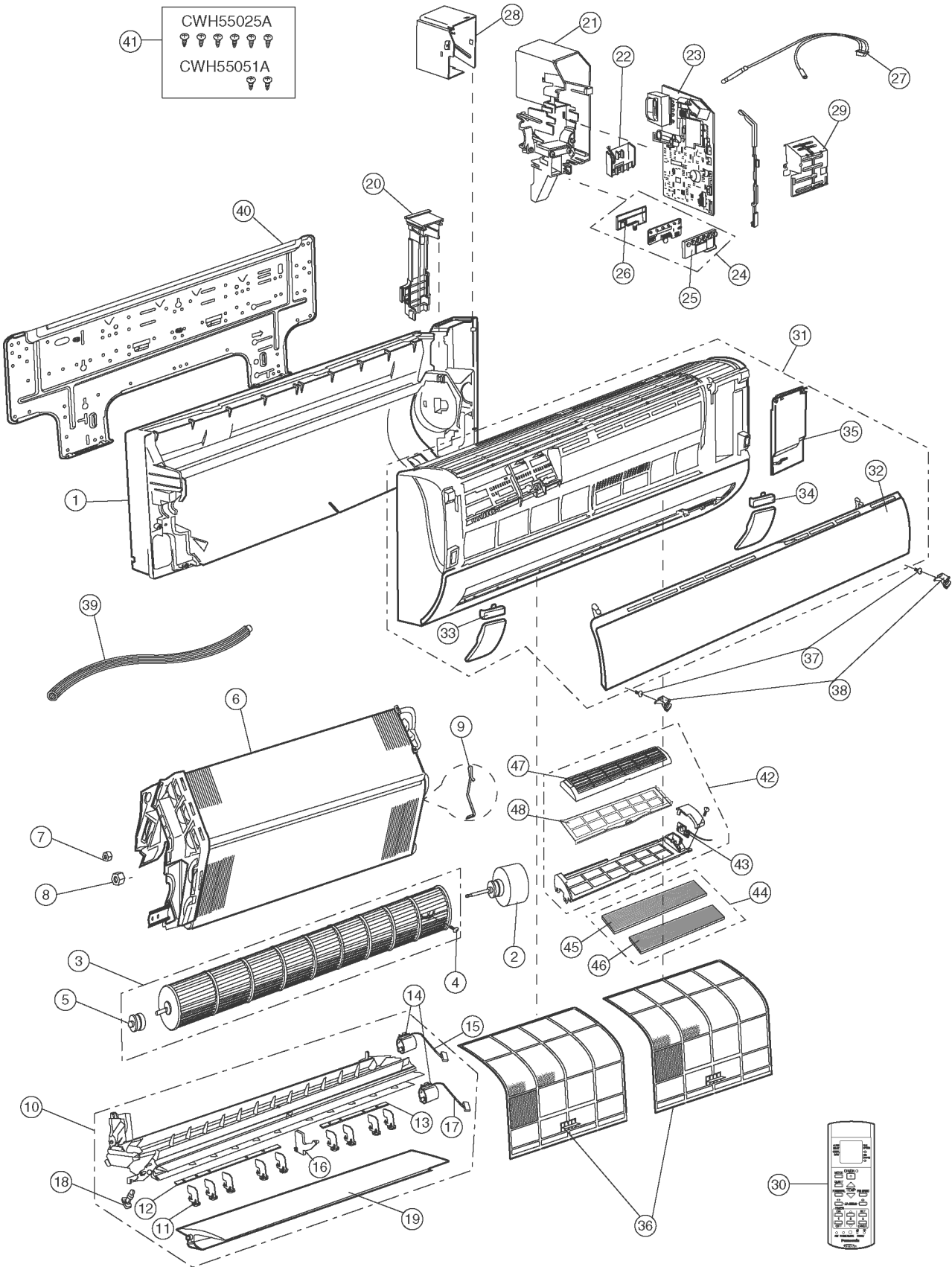
This service information is designed for experienced repair technicians only and is not designed for use by the general public. It does not contain warnings or cautions to advise non-technical individuals of potential dangers in attempting to service a product. Products powered by electricity should be serviced or repaired only by experienced professional technicians. Any attempt to service or repair the product or products dealt with in this service information by anyone else could result in serious injury or death.

TABLE OF CONTENTS

	PAGE		PAGE
1 Safety Precaution	3	8.3. Indicator panel	21
2 Specifications	5	9 Installation Instruction	22
2.1. CS-E9FKR CU-E9FKR	5	9.1. Indoor Unit	23
2.2. CS-E12FKR CU-E12FKR	7	9.2. Outdoor Unit	25
2.3. CS-E15FKR CU-E15FKR	9	10 Operation and Control	28
3 Location of Controls and Components	11	10.1. Basic Function	28
3.1. Product Overview	11	10.2. Protection Control	31
4 Dimensions	12	11 Servicing Mode	34
4.1. Indoor Unit	12	11.1. Auto Switch Operation	34
4.2. Outdoor Unit	13	11.2. Indicator Panel	34
5 Refrigeration Cycle Diagram	14	12 Troubleshooting Guide	35
6 Block Diagram	15	12.1. Refrigeration Cycle System	35
7 Wiring Connection Diagram	16	13 Disassembly and Assembly Instructions	39
7.1. Indoor Unit	16	13.1. Indoor Electronic Controllers, Cross Flow Fan and Indoor Fan Motor Removal Procedures	39
7.2. Outdoor Unit	17	14 Technical Data	41
8 Printed Circuit Board	19	14.1. Thermostat Characteristics	41
8.1. Indoor Unit (Main Printed Circuit Board)	19	14.2. Operation Characteristics	42
8.2. Outdoor Unit (Main Printed Circuit Board)	20		

15 Exploded View and Replacement Parts List

15.1. Indoor Unit



Note
 The above exploded view is for the purpose of parts disassembly and replacement.
 The non-numbered parts are not kept as standard service parts.

REF. NO.	PART NAME & DESCRIPTION	QTY.	CS-E9FKR	CS-E12FKR
1	CHASSY COMPLETE	1	CWD50C1431	←
2	FAN MOTOR, DC 30W 3PH	1	CWA981149J	←
3	CROSS-FLOW FAN COMPLETE	1	CWH02C1045	←
4	SCREW - CROSS-FLOW FAN	1	CWH551146	←
5	BEARING ASSY	1	CWH64K007	←
6	EVAPORATOR	1	CWB30C2011	CWB30C2017
7	FLARE NUT (1/4)	1	CWT251030	←
8	FLARE NUT (3/8) (1/2)	1	CWT251031	CWT251032
9	INTAKE AIR SENSOR HOLDER	1	CWH32143	←
10	DISCHARGE GRILLE COMPLETE	1	CWE20C2637	←
11	VERTICAL VANE	9	CWE241150	←
12	CONNECTING BAR	1	CWE261072	←
13	CONNECTING BAR	1	CWE261065	←
14	A.S.MOTOR, DC SINGLE 12V 300 OHM	2	CWA98260+MJ	CWA98260+MJ
15	LEADWIRE - AIR SWING MOTOR	1	CWA67C3849	←
16	FULCRUM	1	CWH621046	←
17	LEADWIRE - AIR SWING MOTOR	1	CWA67C3977	←
18	CAP-DRAIN TRAY	1	CWH521096	←
19	HORIZONTAL VANE	1	CWE24C1154	←
20	BACK COVER CHASSIS	1	CWD932454	←
21	CONTROL BOARD CASING	1	CWH102259A	←
22	TERMINAL BOARD COMPLETE	1	CWA28C2128J	←
23	ELECTRONIC CONTROLLER-MAIN	1	CWA73C2324	CWA73C2325
24	INDICATOR COMPLETE	1	CWE39C1169	←
25	INDICATOR HOLDER	1	CWD932609	←
26	INDICATOR HOLDER	1	CWD932758	←
27	SENSOR COMPLETE	1	CWA50C2122	←
28	CONTROL BOARD COVER (TOP)	1	CWH131207	←
29	CONTROL BOARD COVER (FRONT)	1	CWH13C1120	←
30	REMOTE CONTROL COMPLETE	1	CWA75C3012	←
31	FRONT GRILLE COMPLETE	1	CWE11C3631	←
32	INTAKE GRILLE COMPLETE	1	CWE22C1237	←
33	DECORATION BASE	1	CWE351141	←
34	DECORATION BASE	1	CWE351142	←
35	GRILLE DOOR	1	CWE141073	←
36	AIR FILTER	2	CWD001144	←
37	SCREW FOR FRONT GRILLE	2	XTT4+16CFJ	←
38	CAP FOR FRONT GRILLE	2	CWH521109	←
39	DRAIN HOSE	1	CWH851063	←
40	INSTALLING HOLDER ASSY	1	CWH361067	←
41	BAG COMPLETE FOR INSTALLATION	1	CWH82C067	←
42	SUPERSONIC AIRPURIFYING DEVICE	1	CWH91C1013	←
43	ELECTRONIC CONTROLLER - SUPERSONIC	1	CWA743874	←
44	SUPER ALLERU & DEO FILTER CO.	1	CWD00C1161	←
45	AIR FILTER-SUPERSONIC	1	CWD001147	←
46	DEODORIZING FILTER	1	CWD001192	←
47	FRAME FR AIR FILTER SUPERSONIC	1	CWD011026	←
48	FRAME FR AIR FILTER SUPERSONIC	1	CWD011027	←

(NOTE)

- All parts are supplied from PHAAM, Malaysia (Vendor Code: 061).
- "O" marked parts are recommended to be kept in stock.

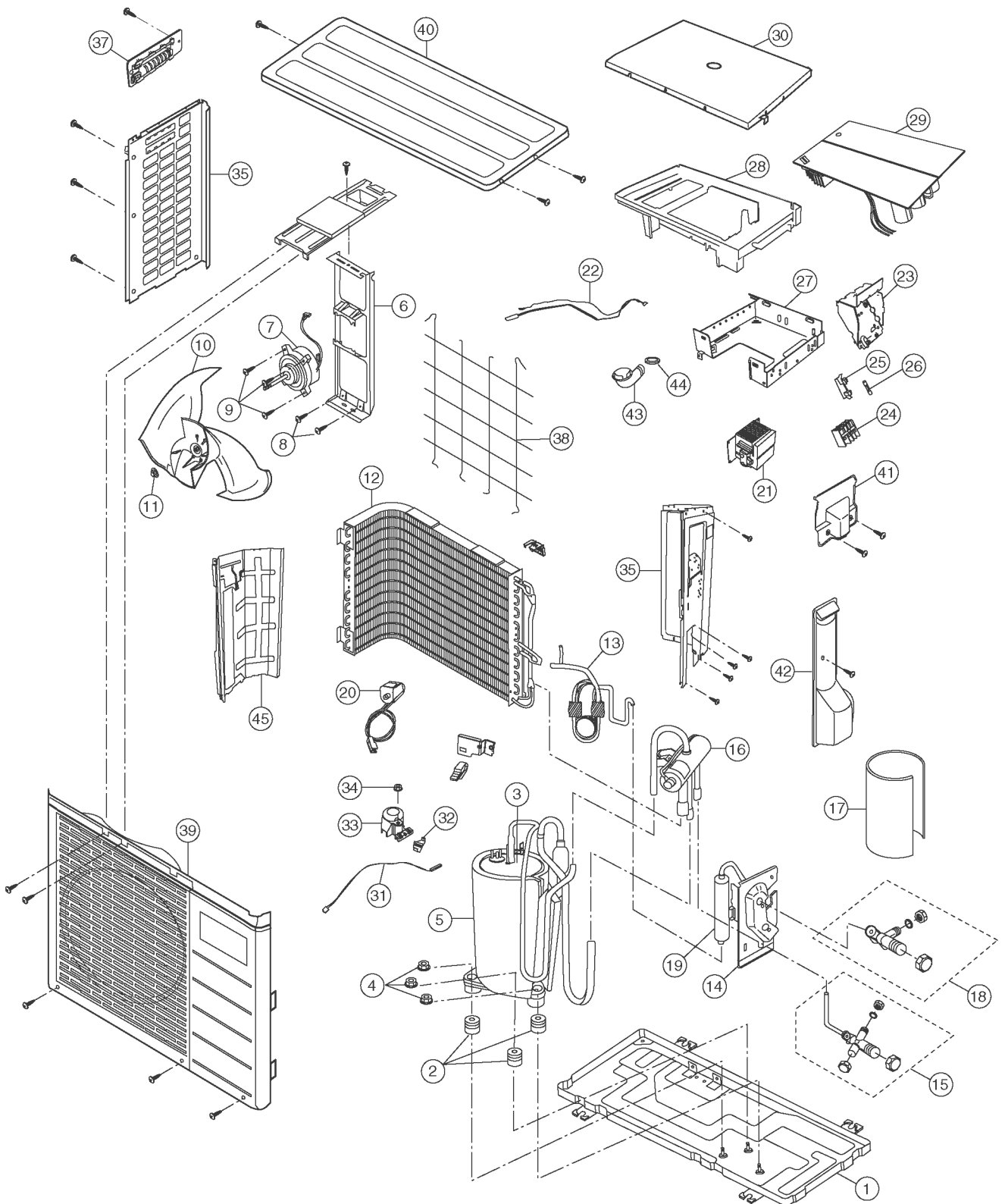
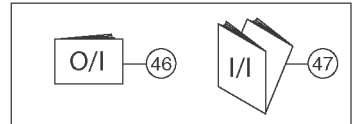
REF. NO.	PART NAME & DESCRIPTION	QTY.	CS-E15FKR
1	CHASSY COMPLETE	1	CWD50C1431
2	FAN MOTORDC 30W 3PH	1	CWA981149J
3	CROSS-FLOW FAN COMPLETE	1	CWH02C1045
4	SCREW - CROSS-FLOW FAN	1	CWH551146
5	BEARING ASSY	1	CWH64K007
6	EVAPORATOR	1	CWB30C1726
7	FLARE NUT (1/4)	1	CWT251030
8	FLARE NUT (1/2)	1	CWT251032
9	HOLDER SENSOR	1	CWH32143
10	DISCHARGE GRILLE COMPLETE	1	CWE20C2637
11	VERTICAL VANE	9	CWE241150
12	CONNECTING BAR	1	CWE261072
13	CONNECTING BAR	1	CWE261065
14	A.S.MOTORDC SINGLE 12V 300 OHM	2	CWA98260+MJ
15	LEADWIRE - AIR SWING MOTOR	1	CWA67C3849
16	FULCRUM	1	CWH621046
17	LEADWIRE - AIR SWING MOTOR	1	CWA67C3977
18	CAP-DRAIN TRAY	1	CWH521096
19	HORIZONTAL VANE	1	CWE24C1154
20	BACK COVER CHASSIS	1	CWD932454
21	CONTROL BOARD CASING	1	CWH102259A
22	TERMINAL BOARD COMPLETE	1	CWA28C2128J
23	ELECTRONIC CONTROLLER-MAIN	1	CWA73C2326
24	INDICATOR COMPLETE	1	CWE39C1169
25	INDICATOR HOLDER	1	CWD932609
26	INDICATOR HOLDER	1	CWD932758
27	SENSOR COMPLETE	1	CWA50C2122
28	CONTROL BOARD COVER (TOP)	1	CWH131207
29	CONTROL BOARD COVER (FRONT)	1	CWH13C1120
30	REMOTE CONTROL COMPLETE	1	CWA75C3012
31	FRONT GRILLE COMPLETE	1	CWE11C3631
32	INTAKE GRILLE COMPLETE	1	CWE22C1237
33	DECORATION BASE	1	CWE351141
34	DECORATION BASE	1	CWE351142
35	GRILLE DOOR	1	CWE141073
36	AIR FILTER	2	CWD001144
37	SCREW FOR FRONT GRILLE	2	XTT4+16CFJ
38	CAP FOR FRONT GRILLE	2	CWH521109
39	DRAIN HOSE	1	CWH851063
40	INSTALLING HOLDER ASSY	1	CWH361067
41	ACCESSORY COMPLETE	1	CWH82C067
42	SUPERSONIC AIRPURIFYING DEVICE	1	CWH91C1013
43	ELEC.CONTROLLER-SUPERSONIC	1	CWA743874
44	SUPER ALLERU & DEO FILTER CO.	1	CWD00C1161
45	AIR FILTER-SUPERSONIC	1	CWD001147
46	DEODORIZING FILTER	1	CWD001192
47	FRAME FR AIR FILTER SUPERSONIC	1	CWD011026
48	FRAME FR AIR FILTER SUPERSONIC	1	CWD011027

(NOTE)

- All parts are supplied from PHAAM, Malaysia (Vendor Code: 061).
- "O" marked parts are recommended to be kept in stock.

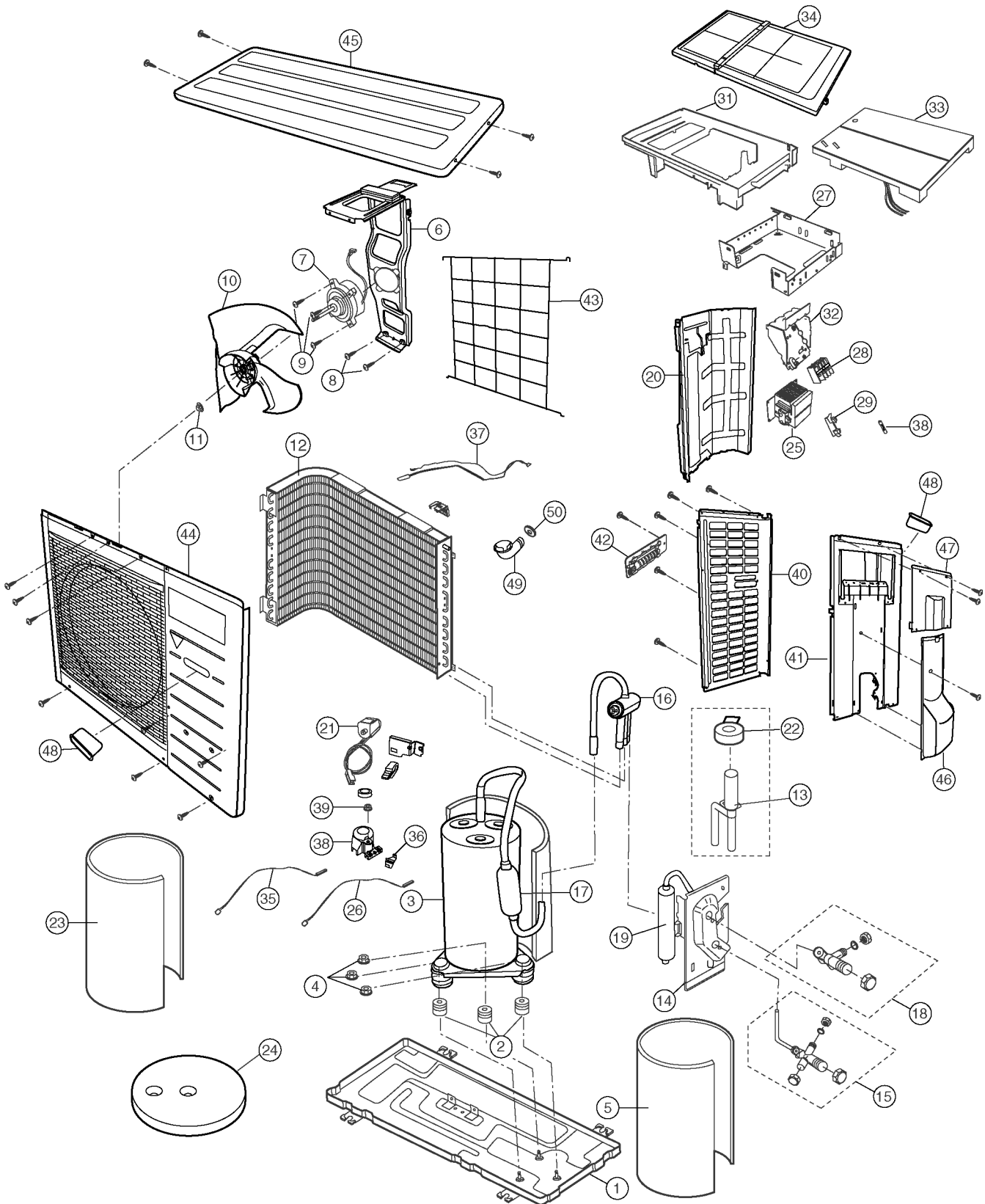
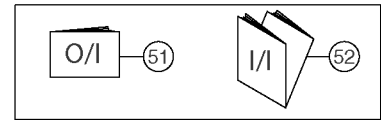
15.2. Outdoor Unit

CU-E9FKR CU-E12FKR



Note
The above exploded view is for the purpose of parts disassembly and replacement.
The non-numbered parts are not kept as standard service parts.

CU-E15FKR



Note
 The above exploded view is for the purpose of parts disassembly and replacement.
 The non-numbered parts are not kept as standard service parts.

REF. NO.	PART NAME & DESCRIPTION	QTY.	CU-E9FKR	CU-E12FKR
1	CHASSY ASSY	1	CWD50K2073	←
2	ANTI-VIBRATION BUSHING	3	CWH50077	←
3	COMPRESSOR	1	5RS102XBC01	←
4	NUT-COMPRESSOR MOUNT	3	CWH56000J	←
5	SOUND PROOF MATERIAL	1	CWG302293	←
6	FAN MOTOR BRACKET	1	CWD541030	←
7	FAN MOTOR (AC 25W SINGLE) (AC 30W SINGLE)	1	CWA951405J	CWA951407J
8	SCREW - FAN MOTOR BRACKET	2	CWH551198	←
9	SCREW - FAN MOTOR MOUNT	4	CWH55252J	←
10	PROPELLER FAN ASSY	1	CWH03K1006	←
11	NUT - PROPELLER FAN	1	CWH56053J	←
12	CONDENSER	1	CWB32C1146	←
13	TUBE ASS'Y CO (CAP./CHK VALVE)	1	CWT01C3257	CWT01C3258
14	HOLDER-COUPLING	1	CWH351023	←
15	3 WAYS VALVE (GAS)	1	CWB011374	CWB011367
16	4 WAYS VALVE	1	CWB001037J	←
17	SOUND PROOF MATERIAL	1	CWG302292	←
18	2-WAYS VALVE (LIQUID)	1	CWB021301	←
19	DRYER	1	CWB101017J	←
20	V-COIL COMPLETE	1	CWA43C2143J	←
21	REACTOR	1	CWA421050	GOA193M00001
22	SENSOR COMPLETE	1	CWA50C2391	←
23	CONTROL BOARD	1	CWH102273	←
24	TERMINAL BOARD ASSY	1	CWA28K1110J	←
25	FUSE HOLDERS	1	K3GB1PH00016	←
26	FUSES CAP TERMINAL	1	K5D203BBA002	←
27	CONTROL BOARD	1	CWH102114	←
28	CONTROL BOARD	1	CWH102115	←
29	ELECTRONIC CONTROLLER-MAIN	1	CWA73C2401R	CWA73C2402R
30	CONTROL BOARD COVER	1	CWH131104	←
31	SENSOR COMPLETE	1	CWA50C2066	CWA50C2205
32	HOLDER SENSOR	1	CWH321010	←
33	TERMINAL COVER	1	CWH171039A	←
34	NUT-TERMINAL COVER	1	CWH7080300J	←
35	CABINET SIDE PLATE CO.	1	CWE04C1011	←
36	CABINET SIDE PLATE (LEFT)	1	CWE041031A	←
37	HANDLE	1	CWE161010	←
38	WIRE NET	1	CWD041054A	←
39	CABINET FRONT PLATE CO.	1	CWE06C1039	←
40	CABINET TOP PLATE	1	CWE031014A	←
41	CONTROL BOARD COVER	1	CWH131110	←
42	CONTROL BOARD COVER	1	CWH13C1064	←
43	L-TUBE	1	CWH5850080	←
44	PACKING-L. TUBE	1	CWB81012	←
45	SOUND PROOF BOARD	1	CWH151025	←
46	OPERATING INSTRUCTION	1	CWF565371	←
47	INSTALLATION INSTRUCTION	1	CWF613024	←

(NOTE)

- All parts are supplied from PHAAM, Malaysia (Vendor Code: 061).
- "O" marked parts are recommended to be kept in stock.

REF. NO.	PART NAME & DESCRIPTION	QTY.	CU-E15FKR
1	CHASSY ASSY	1	CWD50K2085
2	ANTI-VIBRATION BUSHING	3	CWH50077
3	COMPRESSOR	1	5CS130XAD04
4	NUT-COMPRESSOR MOUNT	3	CWH56000J
5	SOUND PROOF MATERIAL	1	CWG302302
6	FAN MOTOR BRACKET	1	CWD541084
7	FAN MOTORDC 40W 3PH	1	CWA981166J
8	SCREW - FAN MOTOR BRACKET	2	CWH551198
9	SCREW - FAN MOTOR MOUNT	3	CWH551106J
10	PROPELLER FAN ASSY	1	CWH03K1016
11	NUT - PROPELLER FAN	1	CWH56053J
12	CONDENSER	1	CWB32C1910
13	TUBE ASS'Y (EXP. VALVE)	1	CWT022999
14	HOLDER-COUPLING	1	CWH351056
15	3-WAYS VALVE (GAS)	1	CWB011361
16	4 WAYS VALVE	1	CWB001026J
17	STRAINER	1	CWB11094
18	2-WAYS VALVE (LIQUID)	1	CWB021292
19	DRYER	1	CWB101017J
20	SOUND-PROOF BOARD	1	CWH151050
21	V-COIL COMPLETE	1	CWA43C2168J
22	V-COIL CO.FOR EXP.VALVE	1	CWA43C2058J
23	SOUND PROOF MATERIAL	1	CWG302290
24	SOUND PROOF MATERIAL	1	CWG302301
25	REACTOR	1	CWA421069
26	SENSOR COMPLETE	1	CWA50C2185
27	CONTROL BOARD	1	CWH102282
28	TERMINAL BOARD ASSY	1	CWA28K1110J
29	FUSE HOLDERS	1	K3GB1PH00016
30	FUSES CAP TERMINAL	1	K5D303BBA002
31	CONTROL BOARD	1	CWH102204
32	CONTROL BOARD	1	CWH102273
33	ELECTRONIC CONTROLLER-MAIN	1	CWA73C2403R
34	CONTROL BOARD COVER	1	CWH131167
35	SENSOR COMPLETE	1	CWA50C2180
36	HOLDER SENSOR	1	CWH321010
37	SENSOR COMPLETE	1	CWA50C2181
38	TERMINAL COVER	1	CWH171039A
39	NUT-TERMINAL COVER	1	CWH7080300J
40	CABINET SIDE PLATE (L)	1	CWE041082A
41	CABINET SIDE PLATE (R)	1	CWE041158A
42	HANDLE	1	CWE161010
43	WIRE NET	1	CWD041041A
44	CABINET FRONT PLATE ASS'Y	1	CWE06K1043
45	CABINET TOP PLATE	1	CWE031031A
46	CONTROL BOARD COVER (BOTTOM)	1	CWH131168
47	CONTROL BOARD COVER	1	CWH131169A
48	HANDLE	2	CWE16000E
49	L-TUBE	1	CWH5850080
50	PACKING	1	CWB81012
51	OPERATING INSTRUCTION	1	CWF565371
52	INSTALLATION INSTRUCTION	1	CWF613025

(NOTE)

- All parts are supplied from PHAAM, Malaysia (Vendor Code: 061).
- "O" marked parts are recommended to be kept in stock.